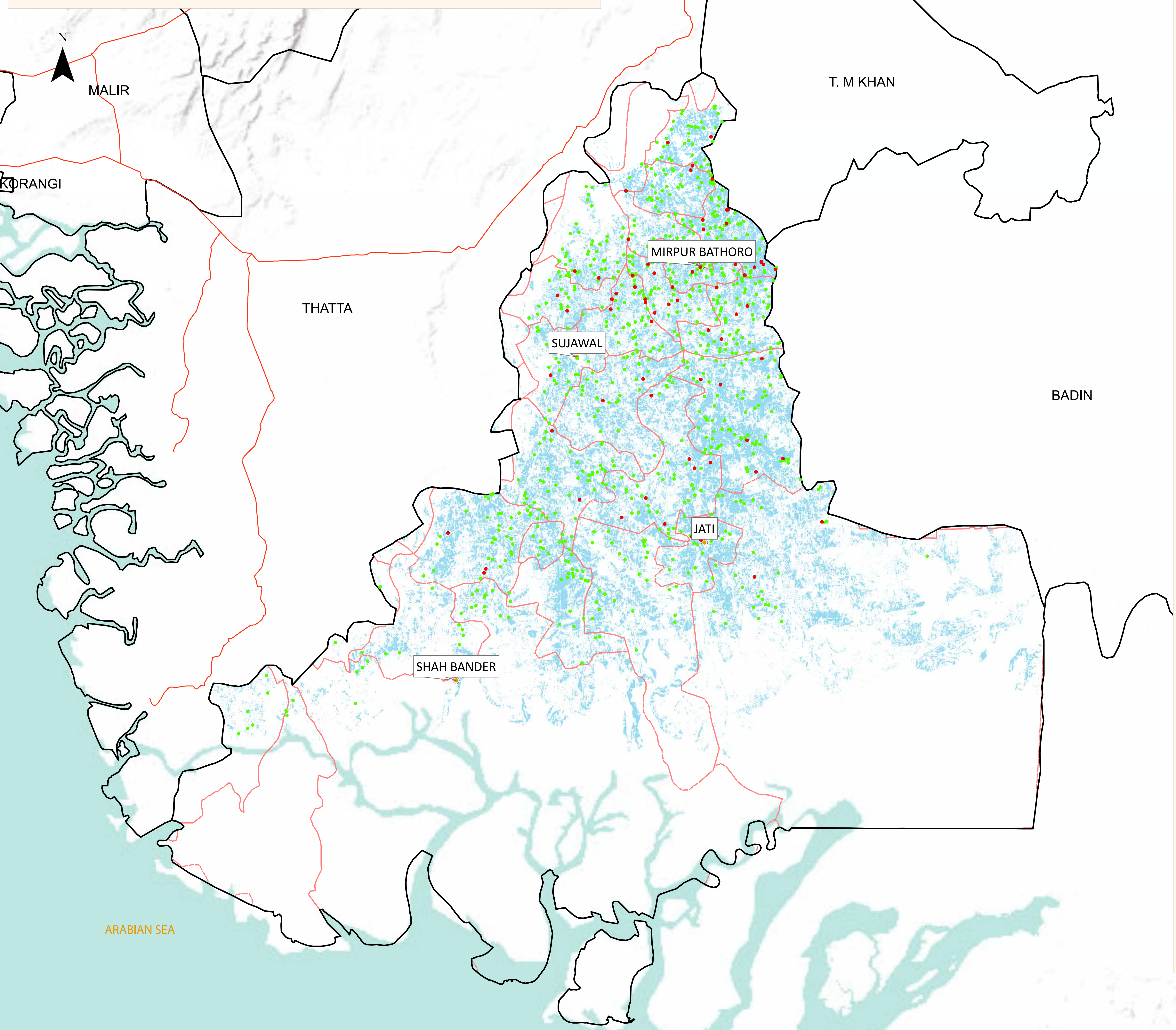


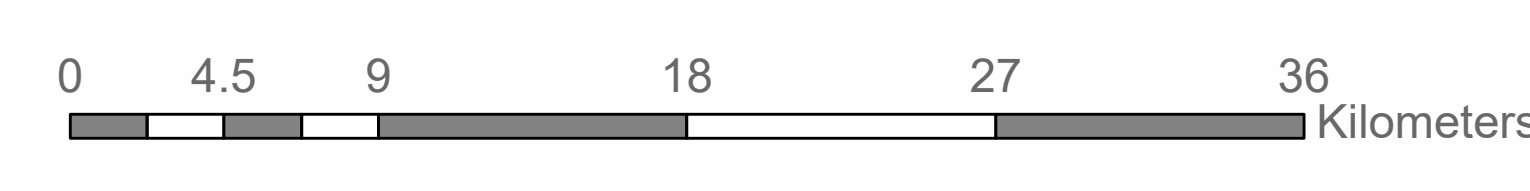
# Flood Inundation in Sujawal District



District Profile		
District Area	8,699.2 Sq.Km	
Area Inundated	1,402.36 Sq.Km	16.12%
Crop Land	622,141.87 Acres	
Crop Land Inundated	254,323.61 Acres	40.88%
Rainfall (Jul-Aug)	461 mm	
Population (as per 2017 Census)	787,504	
Affected Union Councils	37 Out of 37	

UC-Wise Affected Villages		
Name	Submerged in Water	Surrounded by Water
	21/08/2022	21/08/2022
ALI BAHAR	1	21
BACHAL GUGO	1	2
BANO	3	37
BEGNA	7	38
BELO	3	22
BIJORA	3	42
CHUHAR JAMALI	-	8
DARRO	1	25
DARYA KHAN SUHO	5	66
DOULAT PUR	-	10
GOONGANI	3	37
GUL MOHAMMAD BARAN	6	74
JAR	5	38
JATI	3	20
JHOKE SHARIF	15	69
JONGO JALBANI	-	16
KAR MALIK	2	29
KETI BUNDAR	-	7
KHARO CHAN	-	3
KINJHAR	2	31
KOTHI	-	27
LADIUN	-	23
LIAKPUR	2	32
MEHAR SHAH	8	45
MIRPUR BATHORO	5	29
MUREED KHOSO	2	46
UDASSI	-	3

**Disclaimer:** Flood extent published by Sentinel-Asia has been used for preliminary damage assessment and depicts status of flood inundation as of image acquisition date. The Union Council boundaries and names used in development of this product were obtained from Board of Revenue, Sindh.



Preliminary flood damage assessment carried out using Disaster Management Information System (DMIS)  
 @ Provincial Emergency Operation Center (PEOC), PDMA Sindh.

**Product used:** Detected flood water in Baluchistan Sindh provinces, as observed by ALOS-2 image on 21 August 2022.  
**Published by:** <https://sentinel-asia.org/>

Cities/Towns	Union Councils
Submerged under Water	Highways
Surrounded by Water	Flood Water

Sources: Esri, USGS, NOAA, Sources: Esri, Garmin, USGS, NPS